



# CAS

Celemics Analysis Service

Trust CAS with your Bioinformatics Analysis

# About CAS | Celemics Analysis Service

## Introduction

Although NGS-based molecular diagnosis technologies have advanced rapidly, existing BI analysis platforms have not matched the speed of development. Even as the discovery of various new biomarkers and their applications are becoming more prevalent by the day, there are very few solutions in the market that are able to readily react to client needs. As such, Celemics has developed the Celemics Analysis Service (CAS), a revolutionary BI solution aiming to provide client-specific services for the current convoluted and restrictive market using real-time client interaction, need-based customized analysis, and the expertise of our BI analysts.

## Target Customers of CAS

Customers who may have no background knowledge of bioinformatics and/or bioinformatician/BI analysis program capabilities still need a simple analysis pipeline and easy sequencing result interpretation.

*“Using Celemics’ BI analysis service, we were amazed at CAS’ ability to materialize our project, and were grateful to see our hard work come to fruition.*

*Head of Pathology, University Hospital in Korea”*



## Celemics Analysis Service Advantage

### 1. Fast and Accurate BI Analysis

- Easy accession of analysis results, even with no prior knowledge of BI analysis. (No need to hire separate BI specialists)
- Constant monitoring of all analysis processes and results by automated BI analysis pipeline and Celemics BI experts.
- Able to suggest suitable analysis methodology based on experimental purpose, conditions, and status. (Germline, Somatic, FFPE, cfDNA, RNA, Virus, Bacteria, non-human, de novo sequencing, methylation sequencing, etc)
- Analysis pipeline recommended before analysis and developed based on real-time communication with clients.
- Able to utilize analysis programs other than Celemics’ standard pipelines for analysis. \*Prior usage confirmation required
- Real-time troubleshooting and solution provision during analysis process, even for non-standard data sets.
- GDPR-compliant through usage of Europe-based server.
- Able to perform robust CNV calling based on Celemics’ internal reference data.



### 2. Sophisticated Client-Customized Data Analysis

- Annotations based on additional databases per client request possible. \*Prior usage confirmation required.
- Provision of individualized result data reprocessing and visualization based on client needs.
- Able to support optimized analysis proposals based on client’s research or clinical purposes.

### 3. Client Ease of Use

- Real-time troubleshooting and recommendations from Celemics BI experts once erroneous analysis results are detected. Additionally, NGS experts and Celemics continuously monitor the process for issues such as index hopping and will provide alternative solutions.
- Reduction of initial cost and time for factors such as account set-up and usage training.
- Guaranteed fast data transmission speed and short transmission intervals using servers within the European region.
- Individual client-based custom analysis possible using a simple data input interface, removing the need for complicated request processes.
- Removal of the need to purchase a separate high-performance PC or server.

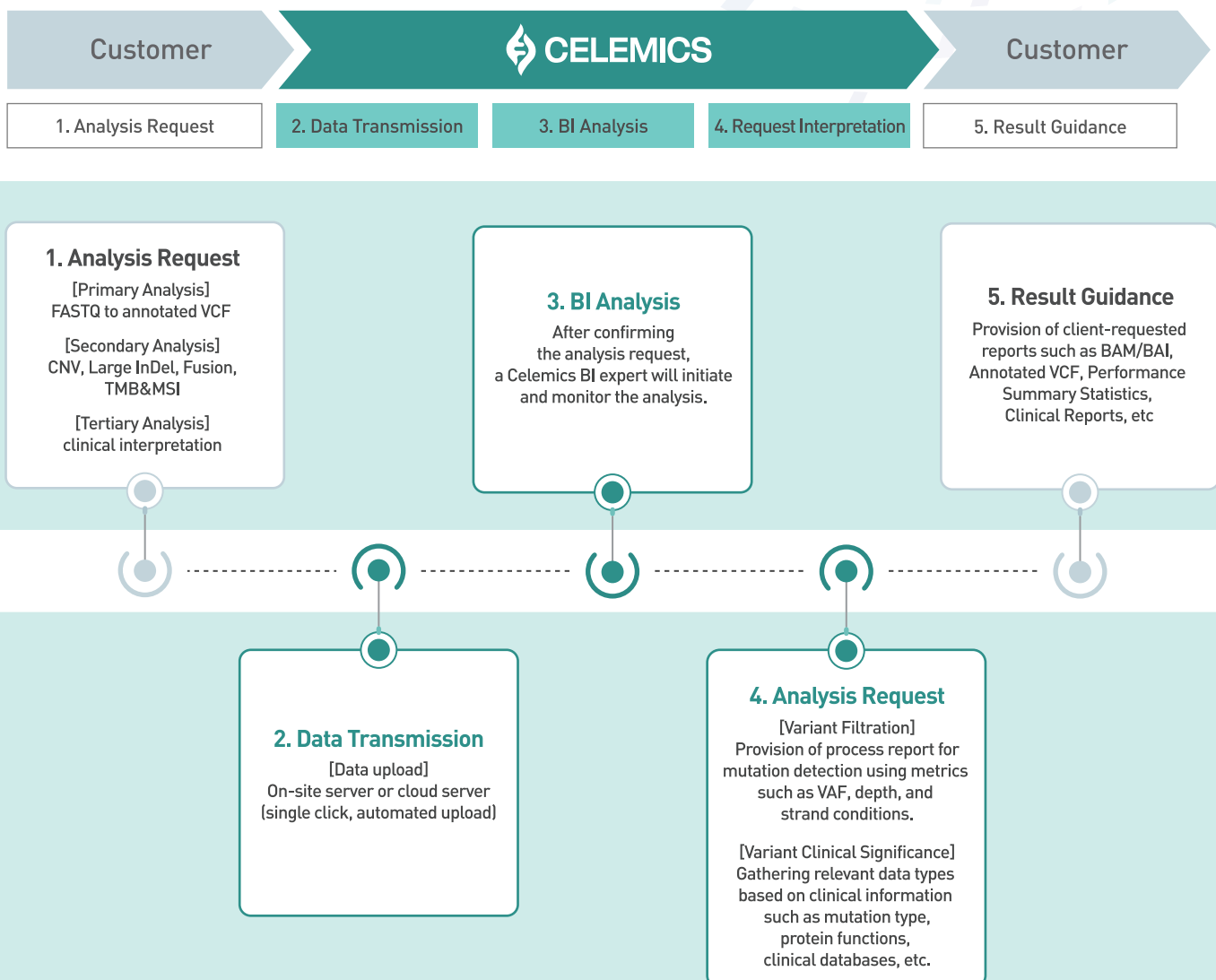
### 4. Cost-Effective Service

- No base account set-up or user registration fee.
- Provision of highly competitive primary/secondary analysis and clinical interpretation.

### 5. Interoperability with Celemics Target Enrichment Panels

- Able to generate analysis results optimized for Celemics panels.

## Celemics Analysis Service Workflow





# CAS

Celemics Analysis Service



## Celemics, Inc.

**ADD** 19F-20F, Bldg. A, BYC Highcity, 131, Gasandigital 1-ro, Geumcheon-gu, Seoul, 08506, Korea

**TEL** +82-2-6746-8067 | **FAX** +82-2-6746-8073 | **E-MAIL** support@celemics.com

[www.celemics.com](http://www.celemics.com)